

FREEHOLD



Residensi
D a m a n s a r a

DISCOVER DAMANSARA'S MOST DESIRABLE LIFESTYLE

INTEGRATED LIVING

Self-contained residential,
commercial and recreational
environment

STRATEGIC LOCATION

Booming neighbourhood
surroundings connected to major
highways (SPRINT, NKVE & LDP) and
close to future MRT line

DOORSTEP SHOPPING CONVENIENCE

Glo Damansara mall with
The BIG Group as the
anchor tenant



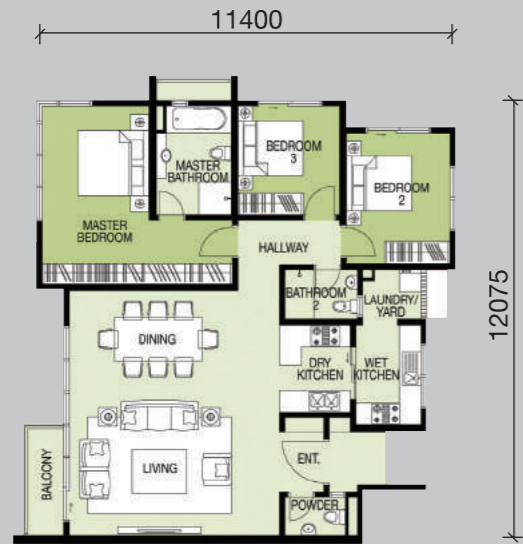
Actual Photo



Actual Photo

Don't Miss Out, Ready to Move in! Call: 1-800-88-9000 / 03-7723 9000

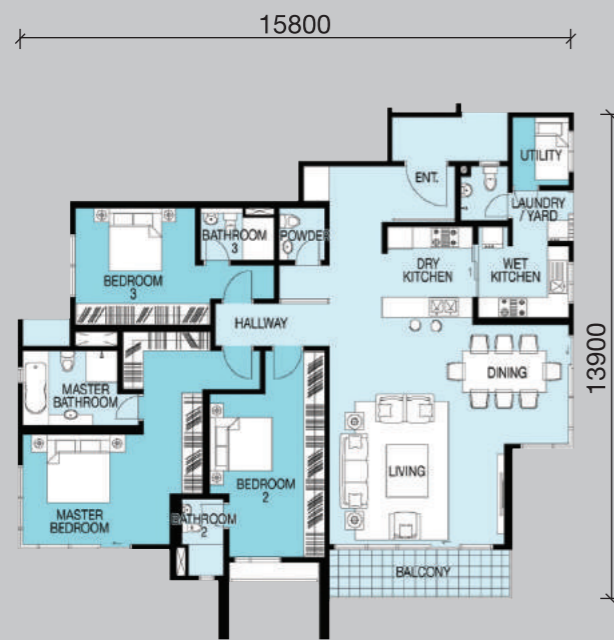
SERVICED APARTMENTS (1,313 sq.ft. – 2,292 sq.ft.) FLOOR PLANS *



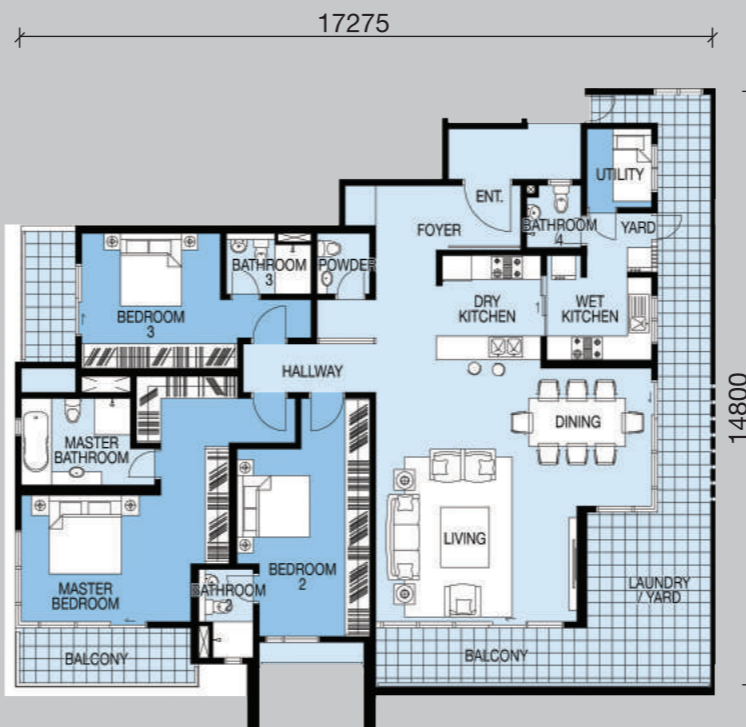
TYPE A(a)1
3 Rooms || Built-Up: 1,313 sq.ft.



TYPE B(a)2
3 Rooms || Built-Up: 1,582 sq.ft.



TYPE C1
3+1 Rooms || Built-Up: 1,840 sq.ft.



TYPE C(a)1 & C(a)2
3 Rooms || Built-Up: 2,292 sq.ft.

SPECIFICATIONS

- STRUCTURE** Shear Wall / Reinforced Concrete Structure Frame
- BRICKS** Masonry Bricks
- ROOF** Reinforced Concrete Roof / Metal Roofing Sheet where applicable
- CEILING** Skim Coat / Fibrous Plaster Ceiling Board where applicable
- WINDOWS** Generally Powder Coated Aluminum Frame Windows with Fixed Panel where applicable
- DOORS**
 - Solid Timber Panel Door for main entrance
 - Solid Timber Panel Door for bedrooms
 - Timber Flush Door for others
 - Aluminum Frame Glass Sliding Door where applicable
- IRONMONGERY** Generally Quality Lock Set
- FLOOR FINISHES**
 - Foyer - Porcelain Tiles
 - Entrance / Living - Porcelain Tiles
 - Dining / Dry Kitchen - Porcelain Tiles
 - Hallway - Porcelain Tiles
 - Master Bedroom - Solid Timber Strip
 - Bedroom 1, 2 & 3 - Solid Timber Strip
 - Utility - Homogeneous Tiles
 - Master Bath - Porcelain Tiles
 - Powder Room - Porcelain Tiles
 - Bath 1, 2 & 3 - Homogeneous Tiles
 - Wet Kitchen - Homogeneous Tiles
 - Yard - Homogeneous Tiles
 - Balcony 1 & 2 - Homogeneous Tiles
 - A/c Ledge - Cement Render

- WALL FINISHES**
 - General - Plaster and Paint
 - Master Bath - Porcelain Tiles to ceiling height
 - Powder Room - Porcelain Tiles up to ceiling height
 - Bath 1, 2 & 3 - Homogeneous Tiles up to ceiling height
 - Dry Kitchen - Homogeneous Tiles to ceiling height except cabinet area
 - Wet Kitchen - Homogeneous Tiles up to ceiling height except cabinet area
 - Yard - Plaster & Paint

SANITARY FITTINGS Generally Quality Fittings And Wares

M&E Installation	Type A(a)1	Type B(a)2	Type C1	Type C(a)1 & C(a)2
Lighting Point	17	19	29	29
13A Switch Socket Outlet	16	20	21	21
Ceiling Fan Point	5	5	6	6
15A Cooker Point	1	2	2	2
Telephone Point	2	2	2	2
Heater Point with Switch	2	2	4	4
SMATV/Astro Point	2	2	2	2
CCTV Point	2	2	2	2
A/C Point	5	5	5	5
Intercom	1	1	1	1
Gas Point	1	1	1	1
Exhaust Fan Point	1	2	2	2
Door Bell Switch & Point	1	1	1	1

- OTHER ACCESSORIES**
 - Kitchen cabinet for dry kitchen only.
 - Air-conditioning units for all bedrooms including living room.
 - Hot water piping system to all bathrooms and wet kitchen only.
 - Shower screen to all baths except powder room and utility / maid's bathroom where available.

*All plans, layouts, information and specifications are subject to change and cannot form part of an offer or contract presentation.

FACILITIES

1. Swimming Pool
2. Gymnasium
3. Reading Room
4. Surau
5. Barbeque Pit / Area
6. Leisure Steam
7. Children's Playground
8. Management's Office
9. Multipurpose Hall
10. Landscape Garden
11. Open Pantry
12. Jacuzzi
13. Changing Room



For more information, call:
1800 88 9000 / 03 7723 9000 or visit www.glomac.com.my

Sales Gallery Opens Monday - Friday From 10am - 6pm

Head Office
 Level 1, Menara Glomac, Glomac Damansara, Jalan Damansara, 60000 Kuala Lumpur, Malaysia.
Sales Office
 Level 1, Menara Glomac, Glomac Damansara, Jalan Damansara, 60000 Kuala Lumpur, Malaysia.

GLOMAC DAMANSARA SDN BHD 307222-X

T 03 7723 9000 W www.glomac.com.my
 F 03 7729 7000 E sales@glomac.com.my

All art rendering and photographs contained are artist impression only. All the above items are subject to variations, modifications and substitutions as may be required by the Authorities and the architect and engineer. All plans, layouts, information and specifications are subject to change and cannot form part of the offer or contract. While every reasonable care has been taken in preparing this project brief, the developer cannot be held responsible for any variations or inaccuracy. * Terms and conditions apply.