



PUCHONG'S NEWEST SHOP OFFICE & RETAIL DESTINATION

Excellent connectivity via the LDP, a high population catchment from immediate surroundings and a cityscape that's complete with modern amenities - Lakeside Boulevard presents everything you could ask for in a vibrant shop office destination. Furthermore, its location within the Lakeside Residences township places it amidst one of the finest neighbourhood environments in Puchong.

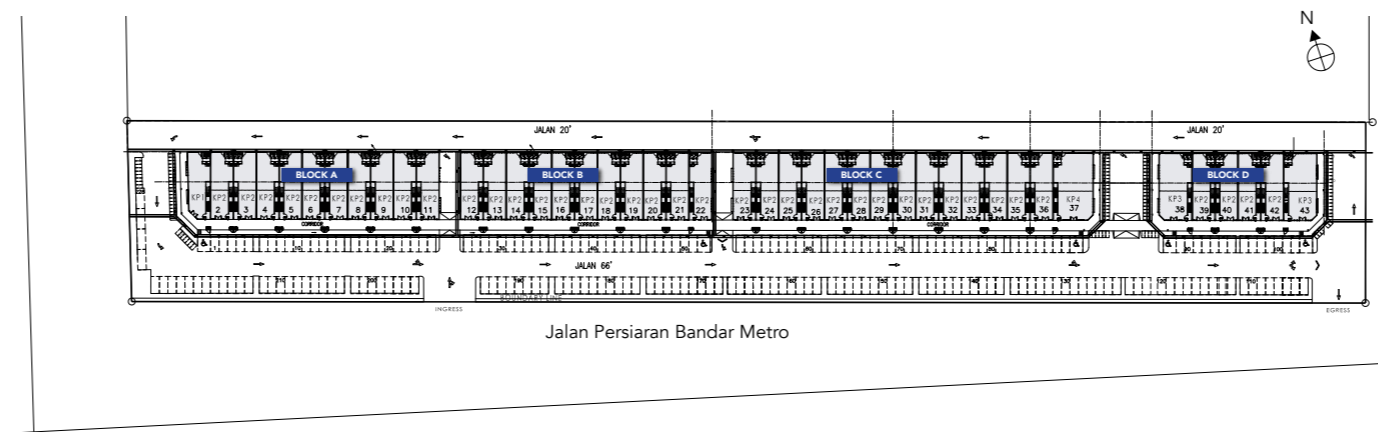


A MODERN MEETING POINT

With the Sunway University and Taylor's University College campuses situated nearby, and the Bandar Puchong LRT being just a walk away, Lakeside Boulevard places your business on the daily transit routes of a large amount of students and professionals alike.

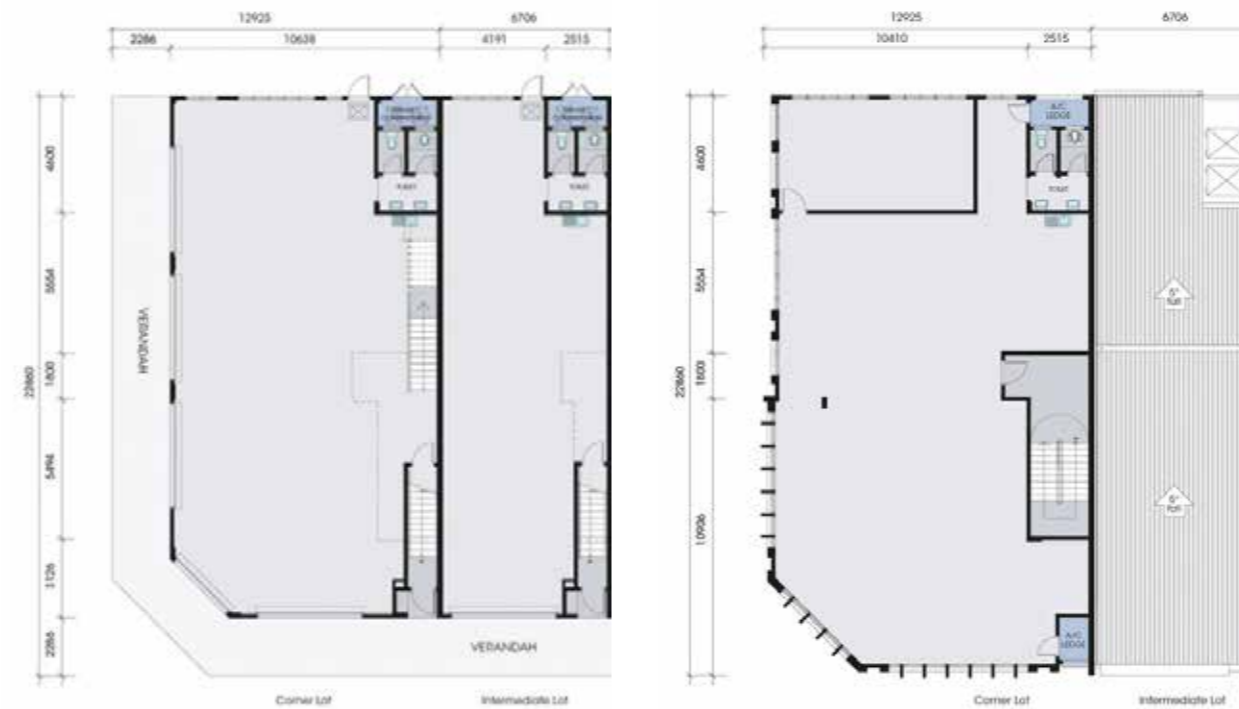


SITE PLAN



FLOOR PLANS

Lot size: 22' x 75' & 38' x 75'
Total: 43 Units
Built-up: Approx. 2,390 sq.ft.



SPECIFICATIONS

| | | | |
|-----------|---|-------------------------|---|
| STRUCTURE | : Generally reinforced concrete frame | DECORATION | : Masonry paint to external wall : Emulsion paint to internal wall |
| WALL | : Cement sand brick | FLOORING | : Homogeneous tile to corridor at ground floor : Ceramic tiles to toilet / wash area, refuse chamber and nosing tiles to staircase : Generally cement render for other area and staircase |
| CEILING | : Generally skim coat to the underside of floor slab : Moisture resistance fibrous plaster board ceiling to toilets | WINDOWS | : Generally powder coated aluminium framed window with 6mm clear float glass panel |
| DOORS | : Powder coated aluminium framed entrance glass door at ground floor : Generally timber flush door with metal door frame : Toilet door composite cubicle system : 1 hr. fire rated door to stairway : Mild steel door to refuse chamber | ELECTRICAL INSTALLATION | : Lighting point 21 : 13A switch socket outlet : Fan point 2 : TV outlet 1 : Fiber wall socket |
| LOCKS | : Generally cylindrical lockset | | |



2-STOREY SHOP OFFICES
WITHIN A VIBRANT HOTSPOT
IN A COMMUNITY-RICH
LAKESIDE ADDRESS



Surrounded with hues of blue, shades of green and a community inspired lifestyle, the 200-acre Lakeside Residences township affords you a holistic lifestyle within its peaceful canvas in Puchong, brought to life with a myriad of lakeside enjoyments. Recreational facilities are aplenty here, headlined by a Clubhouse that features a swimming pool, gym, study room, lounge and outdoor dining.

A 15.33-acre phase will soon be unveiled in the near future, completing this wonderful picture even further for the benefit of the community within and beyond Lakeside Residence.



a population catchment
550,000+
and still growing

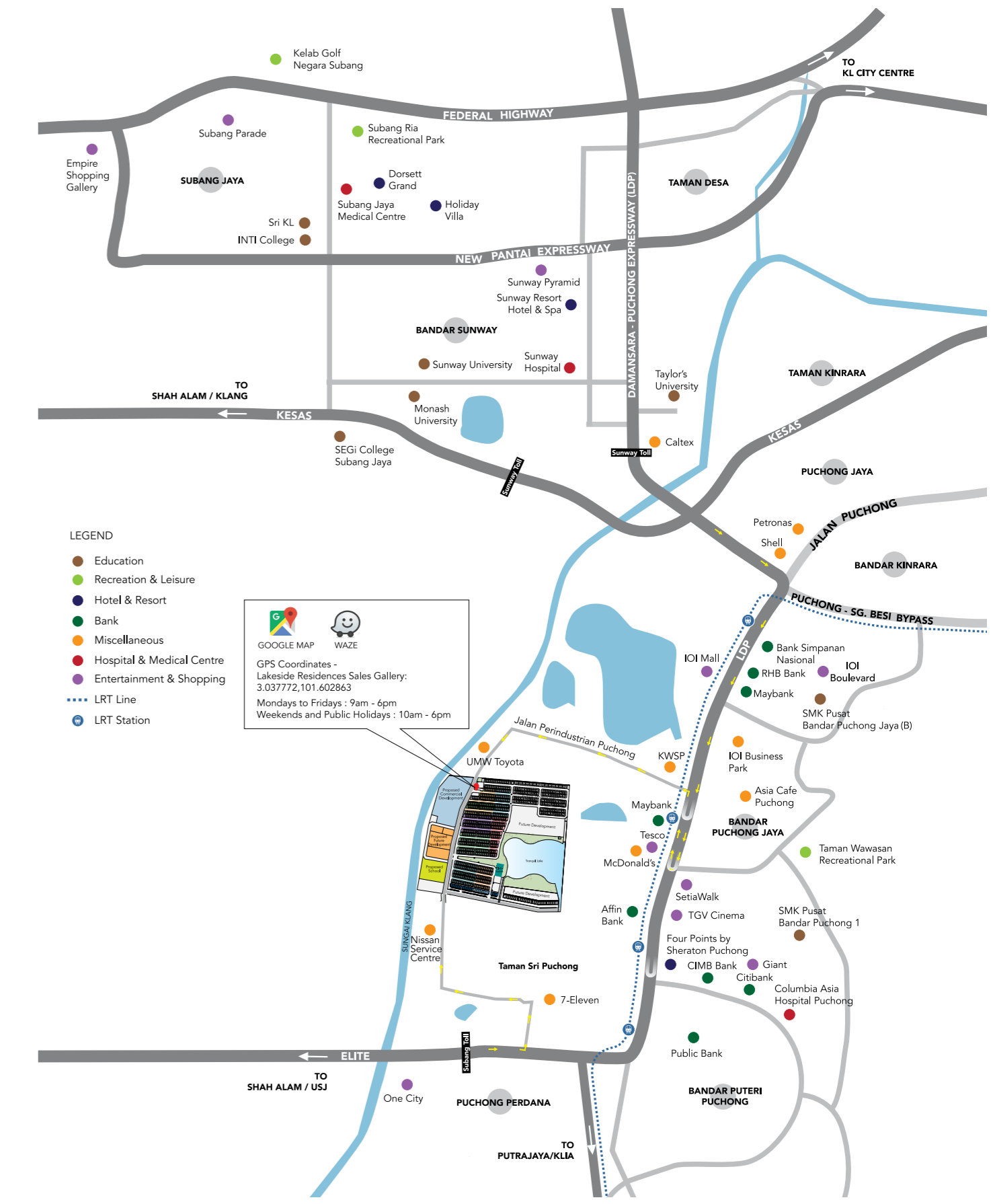


a population catchment
550,000+
and still growing



- 1 **lakeside**
BOULEVARD
- 2 Alia
- 3 RHAPSODY (Phase 1)
- 4 SONATA (Phase 2)
- 5 SYMPHONY (Phase 3)

- 6 AVORY (Phase 4)
- 7 CADENZA (Phase 5)
- 8 SERENADE (Phase 6)



For enquiries, please call
1800 88 9000 or 03 8063 7799
www.glomac.com.my

Developed by Glomac Alliance Sdn Bhd (423582-H)
HQ Office : Level 1, Menara Glomac, Glomac Damansara, Jalan Damansara, 60000 Kuala Lumpur
Sales Office : Lot 35449, Jalan Perindustrian Puchong, Bandar Metro Puchong, 47100 Puchong, Selangor.
T +603 7723 9000 F +603 7729 7000 W www.glomac.com.my E sales@glomac.com.my

The information contained in this visual is subject to change and cannot form part of an offer or contract. All renderings are artist's impression only. All measurements are approximate. While every reasonable care has been taken in preparing this visual, the developer cannot be held responsible for any inaccuracies. All the above items are subject to variations, modifications and substitutions as may be required by the authorities or recommended by the architect or engineer. This visual is strictly for registration purposes only.