

Practical Layout

- Ideal for small to medium-sized businesses seeking a prestigious Cyberjaya address

Easy Convenience

- 66 ft. wide internal roads

High Visibility

- Prominently facing the major road of Persiaran APEC

Huge Ready Catchment

- Over 17,000 university student population
- 40,000 knowledge worker population

Source: *theantdaily.com*, April 2015



GLOMAC CYBERJAYA 2

PURPOSE-BUILT FOR THE BUSINESS OF SUCCESS

RELEASE OF DEVELOPER UNITS

Positioned right in the heart of Malaysia's first cybercity, Glomac Cyberjaya 2 is your strategic business centre as it is surrounded by Multi-National Corporations and international universities. Companies are able to grow and expand with the well-designed spacious layout.

FREEHOLD

READY TO MOVE IN

Start Your Business Now!

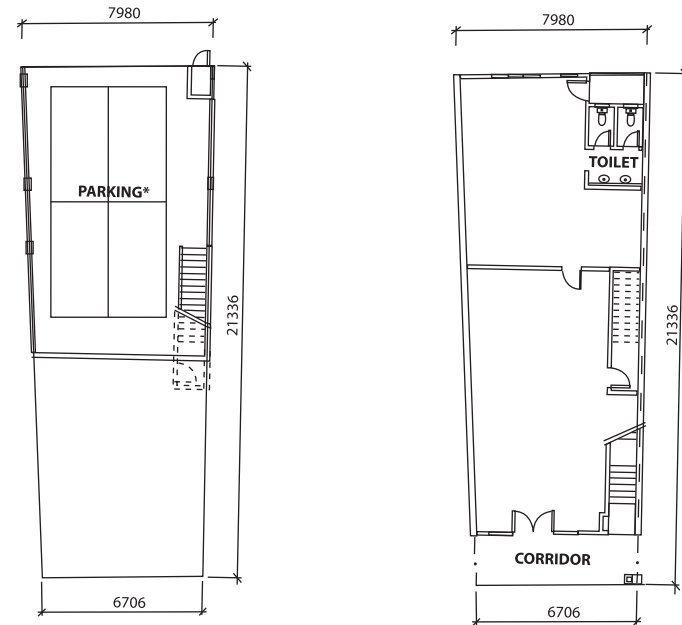
Actual Photo

FLOOR PLANS*

3½ Storey Shop Office

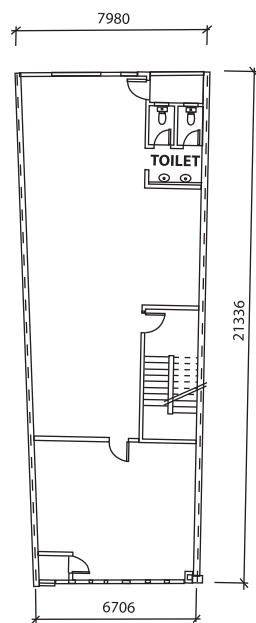
I Land Size I
22' x 70'

I Built-up Area I
6,041 sq.ft. - 6,042 sq.ft.

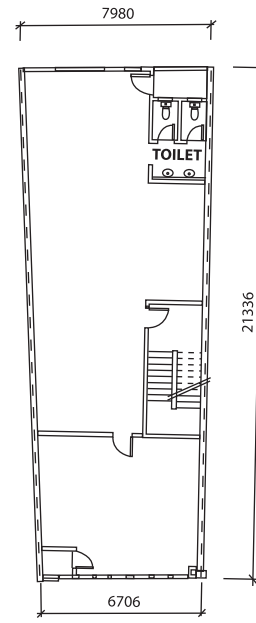


SUB BASEMENT

GROUND FLOOR



FIRST FLOOR

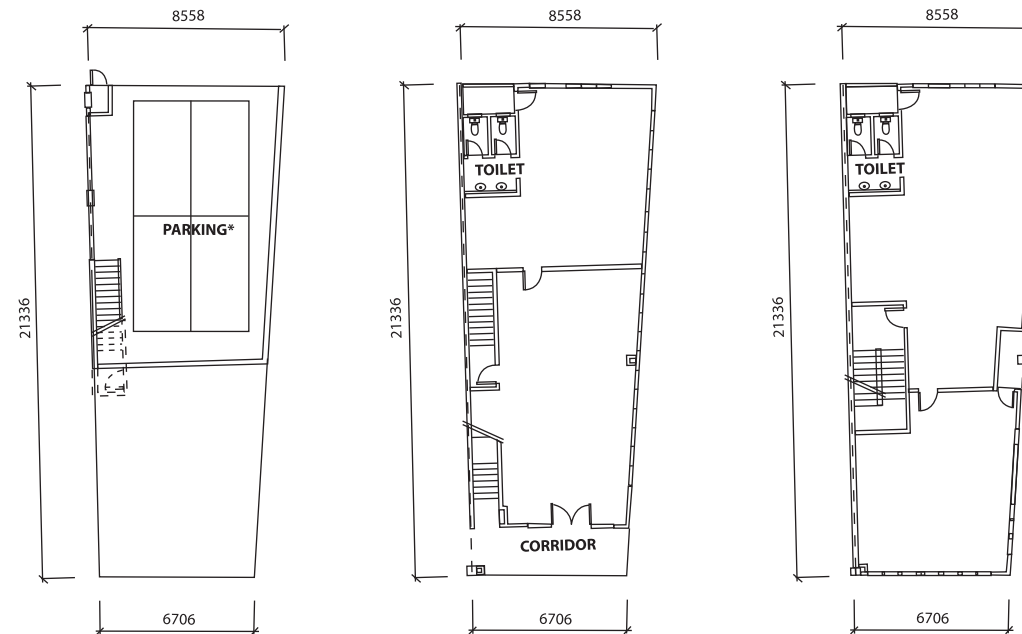


SECOND FLOOR

4½ Storey Shop Office

I Land Size I
22' x 70'

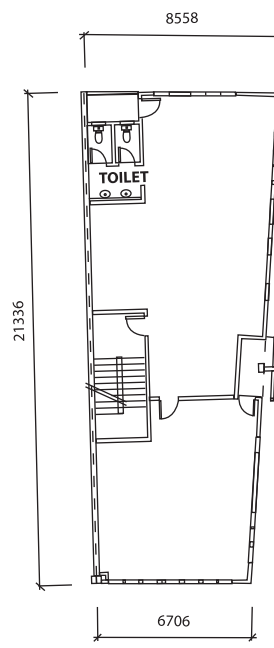
I Built-up Area I
7,345 sq.ft. - 8,511 sq.ft.



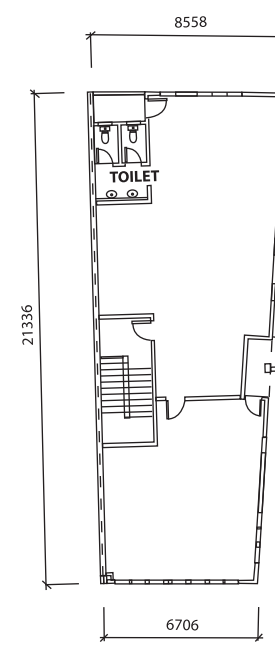
SUB BASEMENT

GROUND FLOOR

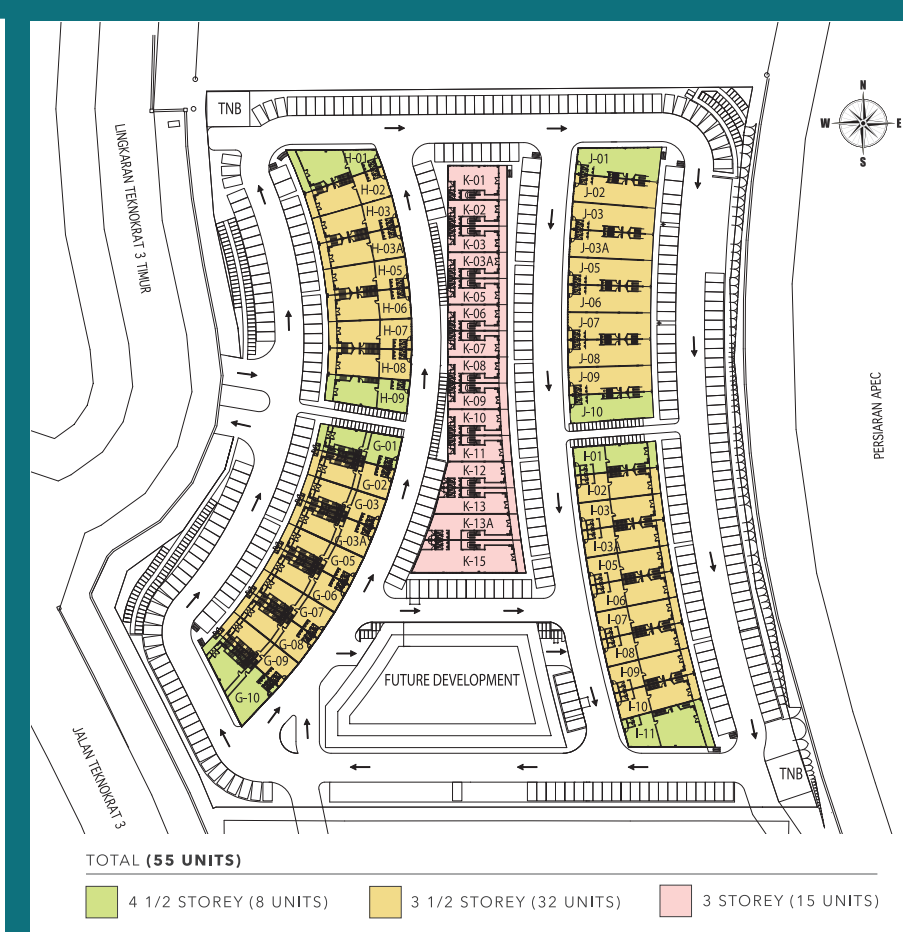
FIRST FLOOR



SECOND FLOOR



THIRD FLOOR



TOTAL (55 UNITS)

4 1/2 STOREY (8 UNITS) 3 1/2 STOREY (32 UNITS) 3 STOREY (15 UNITS)

SPECIFICATIONS

STRUCTURE
Reinforced Concrete Framework

WALL
Cement Sand Brick

ROOF
Metal Deck

CEILING
Where Applicable – Skim Coat

WALL FINISHES
Where Applicable – Plaster and Paint

FLOOR FINISHES
Where Applicable – Cement Render
Corridor (Ground Floor) – Homogeneous Tiles

WINDOWS
Where Applicable – Aluminum Frame with Tinted Glass

DOORS
Where Applicable – Aluminum Frame with Clear Glass / Timber / PVC

LOCKS
Quality Locksets

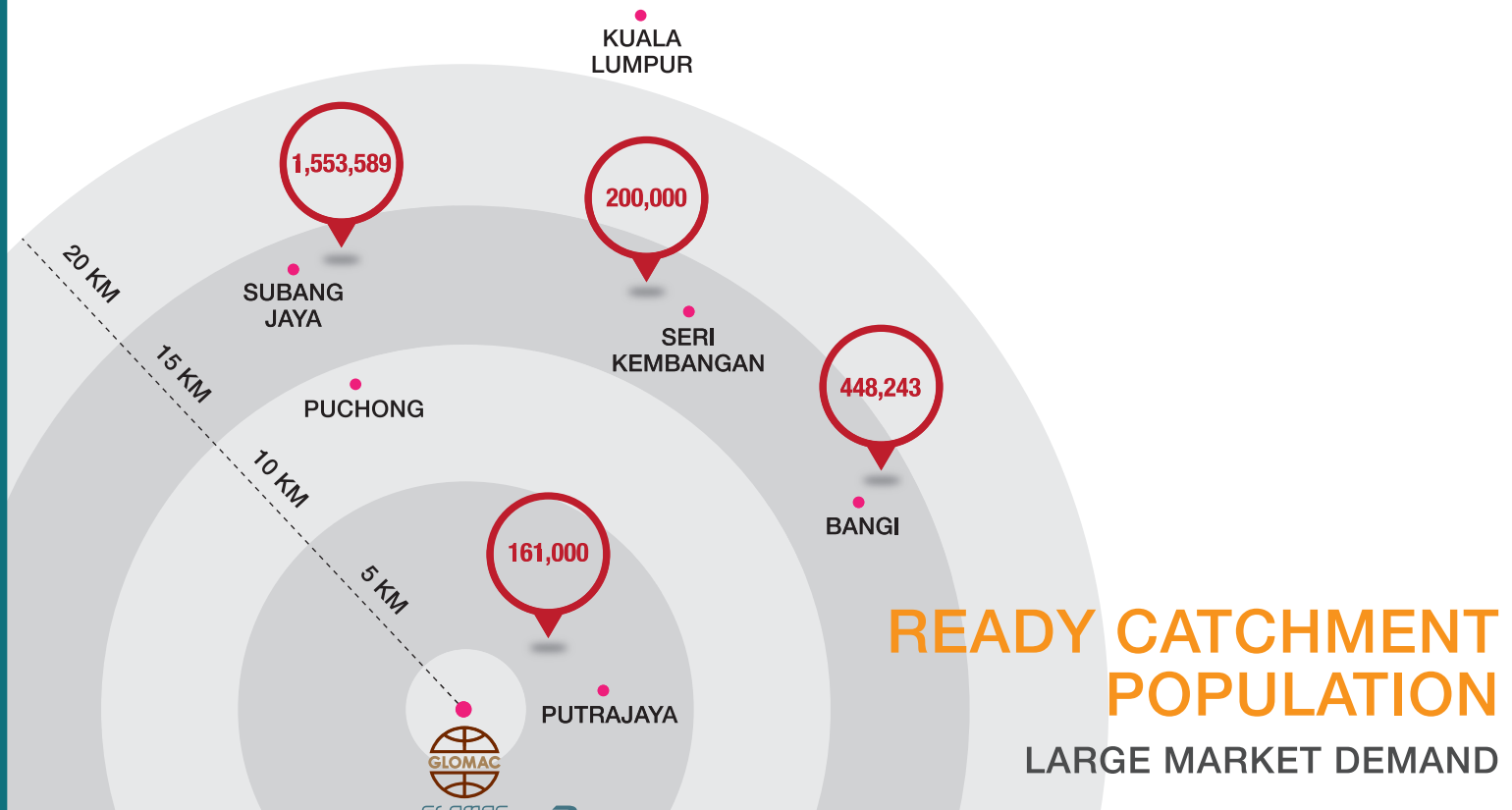
SANITARY
Quality Sanitary Wares / Fittings and Accessories

ELECTRICAL INSTALLATIONS

3 ½ / 4 ½ Storey Shop Offices (Land Size: 22'x70')
(Block A, B, C & D – Intermediate / End / Corner Unit)

	Ground	First	Second	Third
Lighting Point	14	14	14	14
13A Switch Socket Outlet	8	8	8	8

*All plans, layouts, information and specifications are subject to change and cannot form part of an offer or contract presentation.



READY CATCHMENT POPULATION

LARGE MARKET DEMAND

Source: Jabatan Statistik Negara, 2015



LEGEND	
■	INSTITUTION
■	OFFICES
■	RECREATION

- HIGHWAYS**
- 35 mins to Shah Alam
 - 30 mins to KLIA
 - 25 mins to Sepang / Subang
 - 15 mins to Puchong
 - 10 mins to Putrajaya

For more information, call **1800 88 9000 / 03 7723 9000** or visit www.glomac.com.my

Sales Gallery Opens Monday - Friday from 10am - 6pm

All art rendering and photographs contained are artist impression only. All the above items are subject to variations, modifications and substitutions as may be required by the Authorities and the architect and engineer. All plans, layouts, information and specifications are subject to change and cannot form part of the offer or contract. While every reasonable care has been taken in preparing this project brief, the developer cannot be held responsible for any variations or inaccuracy. * Terms and conditions apply.